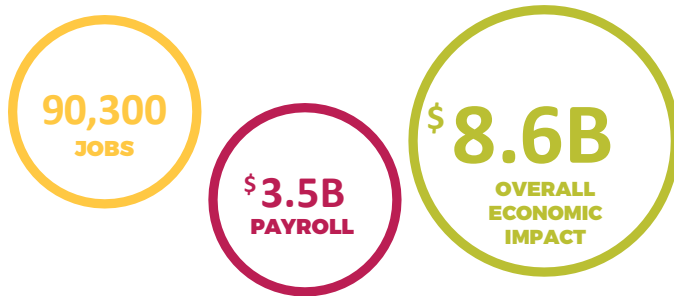


## Why **Nebraska Aviation Counts!**



Nebraska's airport system makes valuable contributions to the communities it serves, providing access to the state 24 hours a day, seven days a week, 365 days a year. Nebraska's Airports are a dynamic part of the state's economy.

The Nebraska Department of Transportation's Aeronautics Division commissioned this Nebraska Aviation Economic Impact Study to measure the benefits provided by the state's airport system. This study shows how Nebraska airports are important economic engines.



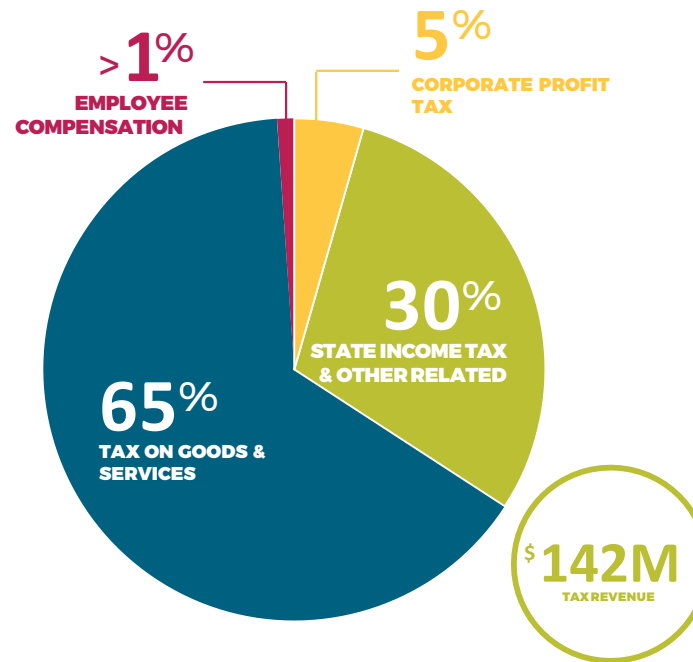
TOTAL VALUE OF AIRCRAFT IN  
HASTINGS COUNTY

**\$8M**

TOTAL VALUE OF AIRCRAFT IN NEBRASKA

**\$920M**

## Airport-Related Taxes

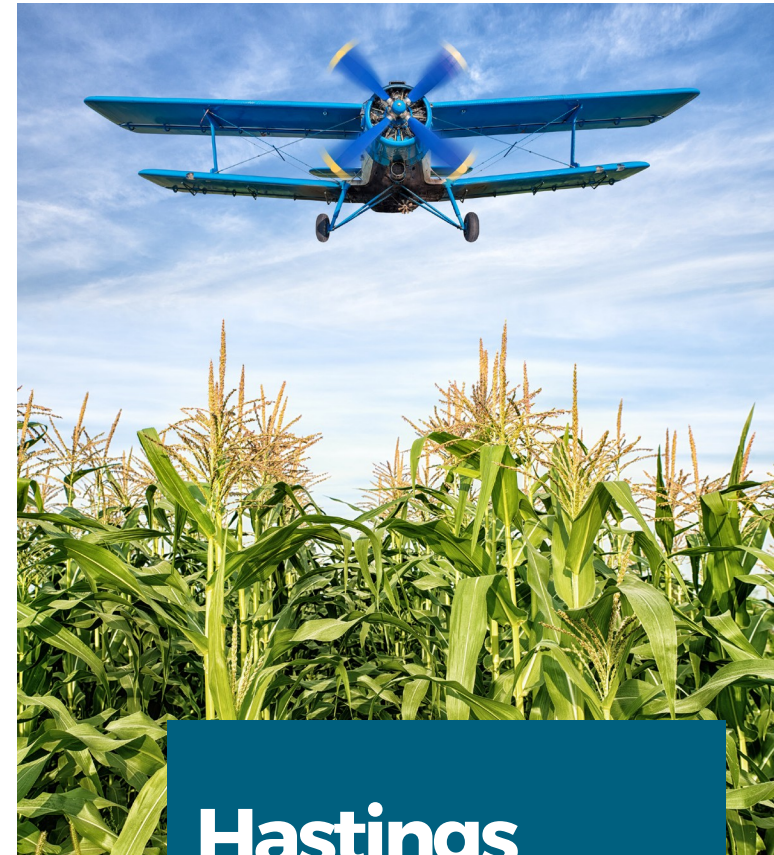


In addition to the economic impact from jobs created and direct and indirect spending, the state receives a significant amount of tax revenue. The tax analysis conducted during the study examined revenue generated from the taxes paid by on-airport businesses, general aviation and commercial service visitors, and workers in airport-related activity. When combined, airport related activity generates an estimated \$142M in tax revenue on direct spending only for the state of Nebraska.

**NEBRASKA**  
Good Life. Great Journey.  
DEPARTMENT OF TRANSPORTATION

Nebraska Department of Transportation -  
Division of Aeronautics  
3431 Aviation Road  
Lincoln, Nebraska 68524  
[dot.nebraska.gov](http://dot.nebraska.gov)

## THE ECONOMIC IMPACT OF



**Hastings  
Municipal**  
Airport

## THE OVERALL BENEFIT TO NEBRASKA OF THE HASTINGS MUNICIPAL AIRPORT



**137**  
JOBS



**\$4M**  
PAYROLL



**\$10.5M**  
IMPACT

## Study Methodology

The Nebraska Aviation Counts! team conducted the Study using guidelines set by the Federal Aviation Administration (FAA). Primary data was gathered by surveying airport managers, airport tenants, and visitors who traveled to Nebraska by commercial service or general aviation aircraft. While primary data is the core of the analysis, missing values and industry-specific information was calculated using secondary data sources.

The primary and secondary data collected for Nebraska airports provided the direct impacts driving the economic modeling effort for this study. The Impact Analysis for Planning (IMPLAN) modeling system was used to calculate aviation's total impact to the Nebraska economy.

## Impact Types

### Direct Impacts

Related to the provisions of aviation services, visitors' spending, or the activity of aviation-reliant businesses.

### Indirect Impacts

Any portion of direct business revenue from affected businesses used to purchase goods or services within the state.



### Induced Impacts

Any portion of direct or indirect revenues paid to on-airport workers and spent on goods and services within the state.

### Total Economic Impacts

The total sum of both direct impacts and spin-off effects generated throughout a year.

## Impact Measures



### Jobs

Number of full-time equivalent (FTE) jobs. Part-time positions are considered half of one FTE worker with seasonal workers calculated proportionally to one full-time worker.



### Payroll

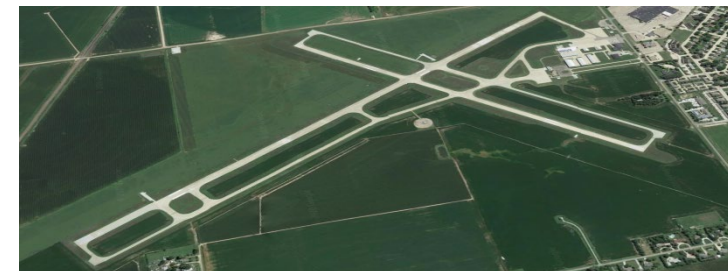
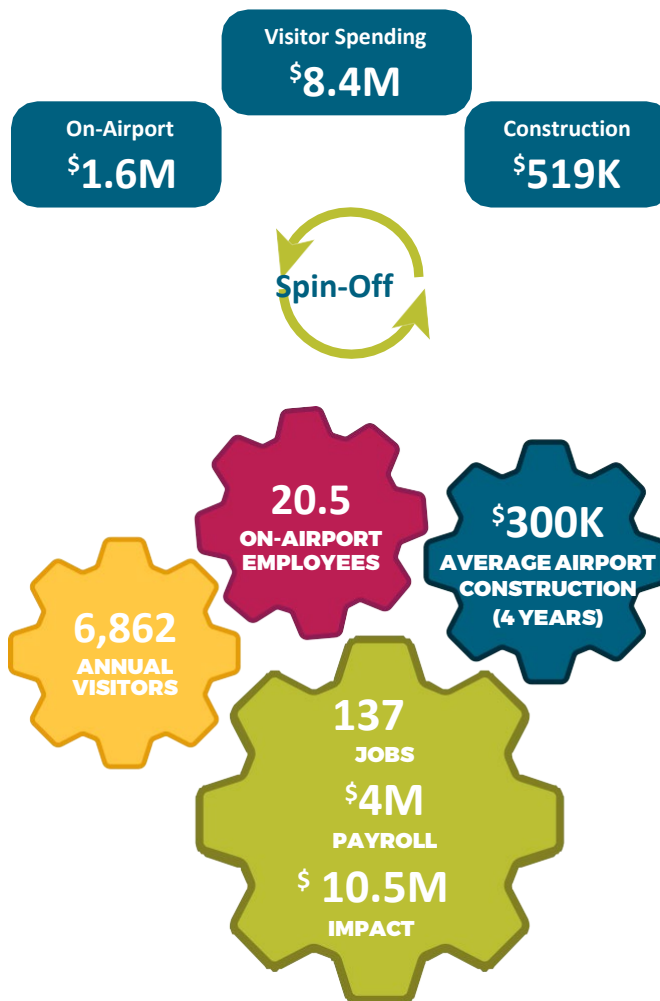
Amount of total annual salary, wages, and benefits paid to all FTEs calculated under jobs.



### Economic Impact

Combined annual value of goods and services generated from any airport-related activity.

## Hastings Municipal Airport HSI



Considering a new project at the airport?  
Try the new project calculator  
[nebraskaaviationcounts.com](http://nebraskaaviationcounts.com)

